



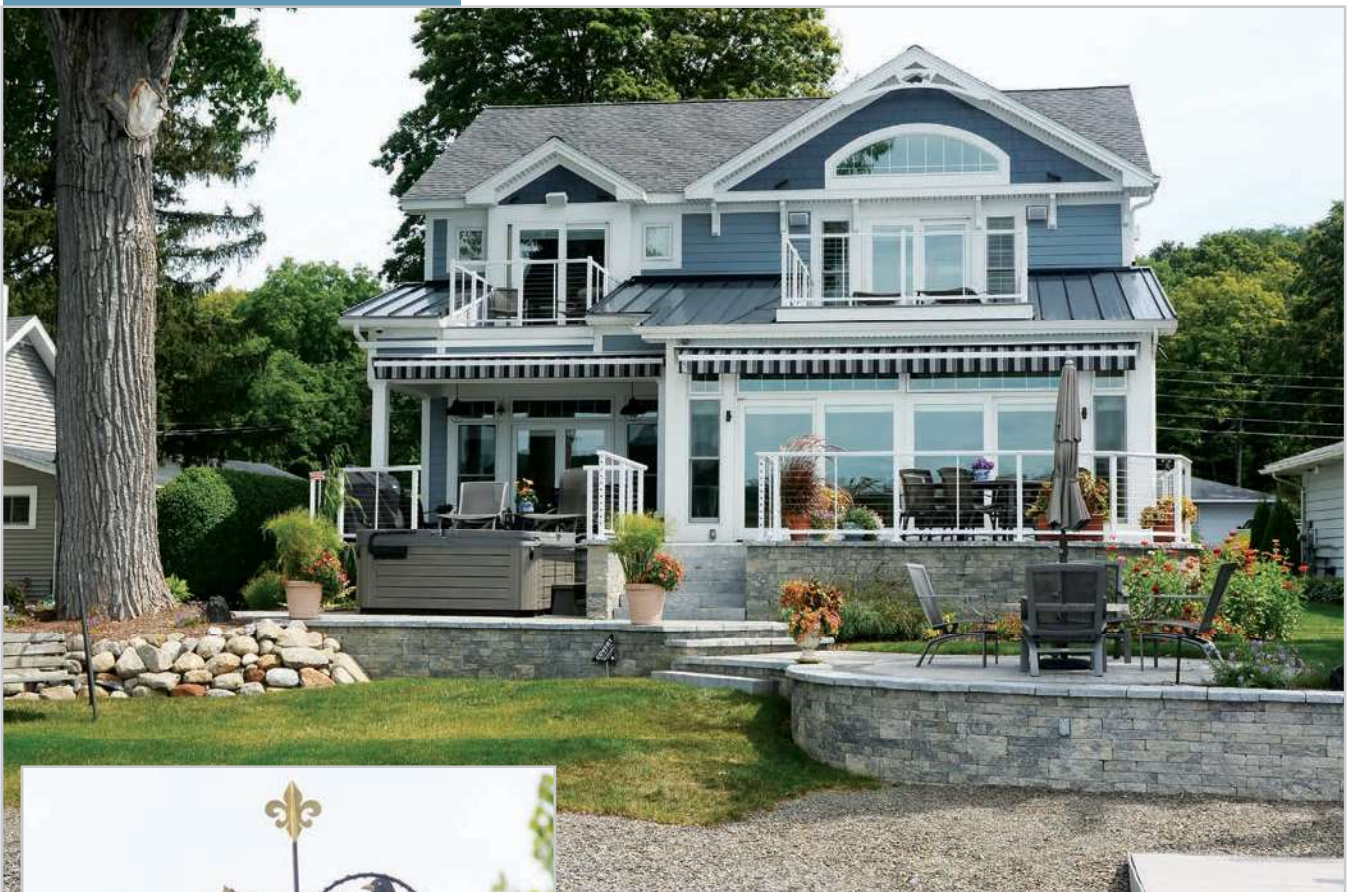
# four seasons

“We named our home, Our Four Seasons, because we revel in the changing seasons. We could have gone south but decided to retire right here in the Finger Lakes.”  
—Marian Walrath

HEWITT POINT NEW CONSTRUCTION

A LAKE HOME THAT EMBRACES THE FINGER LAKES CHANGES

BY DONNA DE PALMA | FREELANCE WRITER  
PHOTOS BY JACK HALEY | MESSENGER POST MEDIA



Starting from the ground up: When Paul and Marian Walrath brought Lin Hough, of Hough Builders, to their summer getaway on Keuka Lake to discuss converting it into a year-round home, they realized their best option would be to start from the ground up and build a new home.

“The cost of bringing our existing home up to code would have been prohibitive because of code changes since the time our summer home was built,” Walrath said. The couple has summered on the lake since 1992.



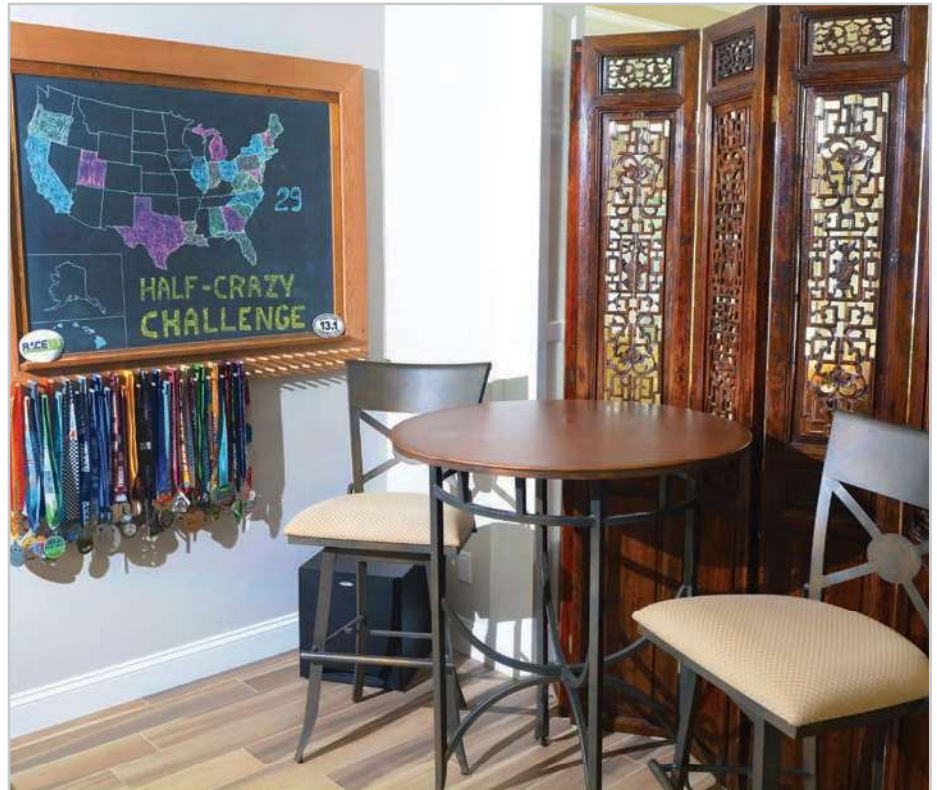
Before agreeing to work with Hough Builders, the Walraths went to look at houses Hough built on and near Keuka Lake. The homeowners they spoke to overwhelmingly agreed that working with Hough Builders was a stellar experience.

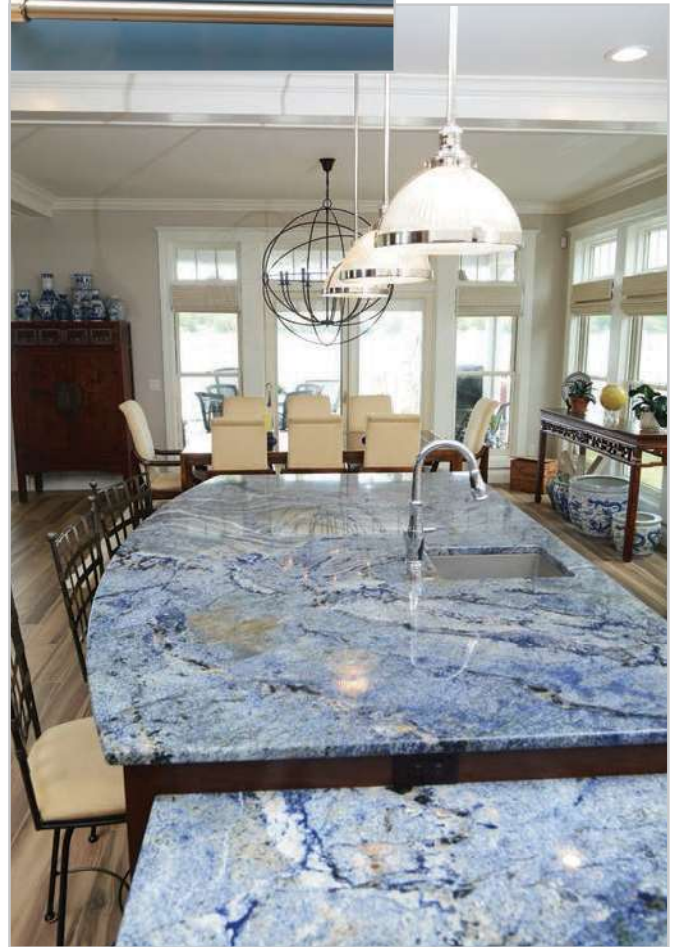
The Walraths, above all, wanted a lake-friendly home. “We envisioned a home that would be open, filled with light and would feature easy access to the outdoors,” said Walrath. The couple decided upon a unique design that incorporated a cupola and a stair tower in the center of the house.

“We live on Hewitt Point, a section of lakefront that’s flat to the lake. Our lot is long and narrow. Cathedral ceilings on the main level would have taken up too much room. We chose a cupola with uniquely-shaped ceilings on the second floor for the best use of space.”



To enhance the views of the lake, the home has a large deck, an enclosed all-season sun porch, smaller decks and cable railings that won't obstruct the beauty of the water. Special attention to terraced hardscaping (man-made features in landscape architecture) on the exterior of the home and landscaping that's lake-friendly were essential. Paver walks and patios surround the home with areas set up for separate activities.







Marian Walrath's second priority was her kitchen which showcases a 72" custom range from Lacanche. The French blue stove, imported from France, has seven burners, a grill, French plate and nickel hardware. An oversized white oven hood, blue tile backsplash and white cabinetry flanking the range create a functional yet elegant look. The traditional white and blue kitchen has a massive island in the center with walnut cabinets underneath. Countertops are blue granite from Brazil and flooring is faux wood ceramic tile, another lake-friendly feature.



The 4,100 square foot, two-story home features a traditional exterior in gray with white trim and sections of clapboard-look cement board on the garage and on portions of the exterior. Steve Lang of Van Scoter Landscaping and landscape architect, Heinrich Fischer, RLA, collaborated on exterior design and plantings. Exterior accent lighting was planned by Niggli Associates.

The open floor plan on the main floor of the home features an entire wall of windows and sliding doors overlooking the lake. A long and low fireplace in the main living area, coffered ceiling with recessed lighting and a walnut wet bar suggest comfortable living.

The master bedroom is on the lakeside of the house with sliding glass doors out to a deck. A window above the deck doors in the master is arched to create unusual ceiling lines. References to the seashore on bed linens are blue and hints of spring colors make this room a refreshing escape.





A curbless shower with trench drain and large-format tile in the master bath are the embodiment of function and style. A palette of cool muted colors makes the room a serene retreat.

Not only is this home beautiful, it's energy-conscious with geothermal support for HVAC. "We had two 300 foot wells dug on part of the property that loop into the ground. We bring in water at 50 or 60 degrees to cool instead of warmer air that's usually much hotter than 60 degrees in the summertime."

Tile floors throughout the home have radiant heat to help keep them warm throughout the winter. All lights are LED and a home automation system turns lights on and off. Efficient Pella windows keep cold air out and warm air in.

"We named our home, Our Four Seasons, because we revel in the changing seasons. We could have gone south but decided to retire right here in the Finger Lakes. We had a weathervane custom-made by Rhode Island artisan, David Ferro, which sits atop our cupola. It incorporates the theme of the four seasons and reminds us of the beauty of each season," said Marian.

Paul said they are pleased with their new home. "Lin Hough is a neighbor of ours. He lives a half mile down the road. He tells us we were one of the most organized clients he's ever had. We couldn't be happier here."

• • •

